

Customer :

customer

Customer part :

customer part

Comment :

Comment

S1=3.3

S2=4.05

Tmax=456

Tp S2=495.0

PI=0.45

HI=127

Sample =1649.10

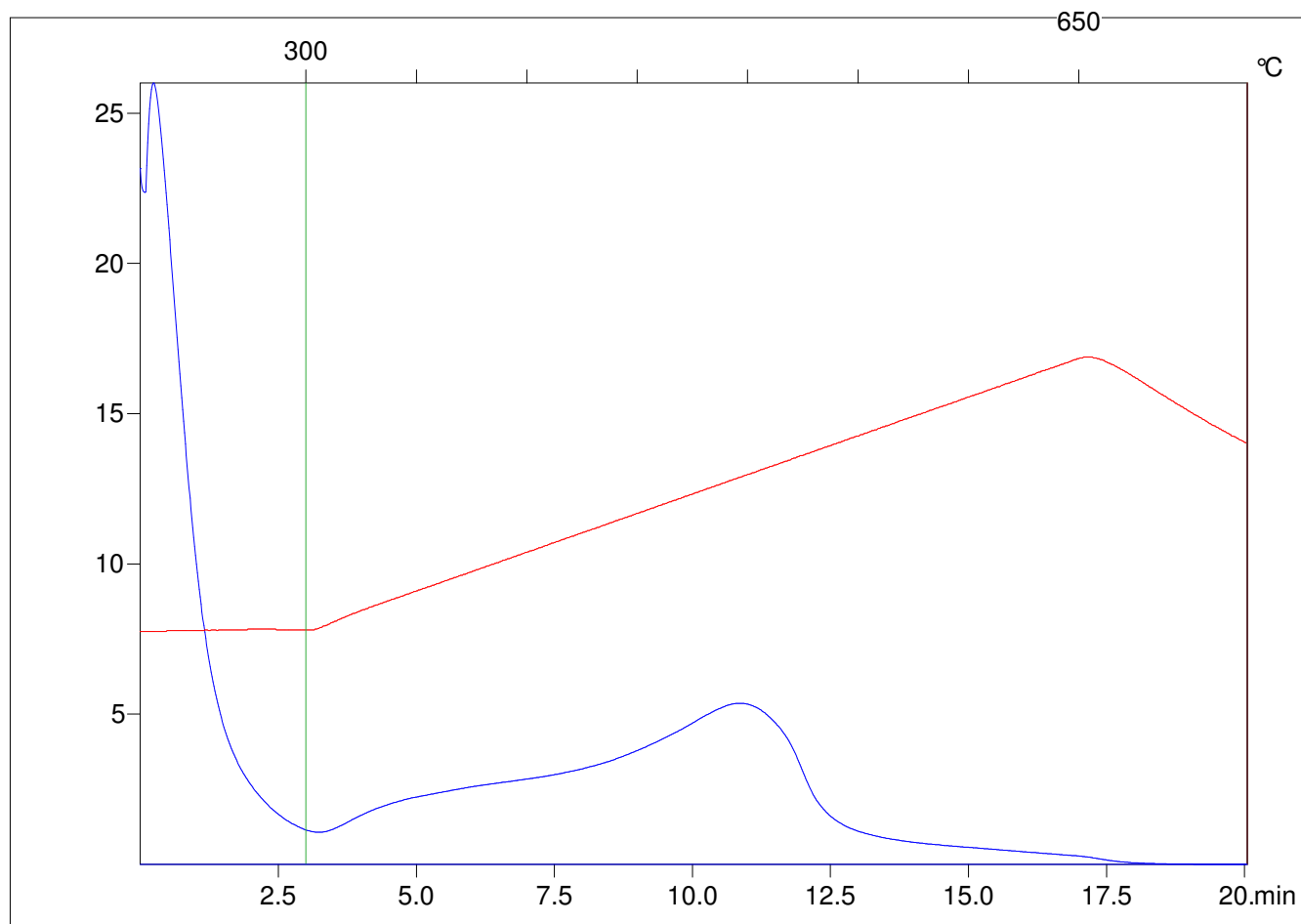
Method =Bulk Rock

Cycle=Basic

KFID(10*9)=1444

Qty =70.4

TOC=3.18



C:\VINC\PK1792\PK062.R00 : FID pyrolysis graphic

State

Pyro Status

Oxi Status